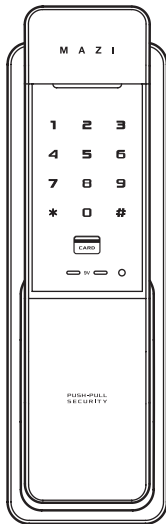


# ENTECS

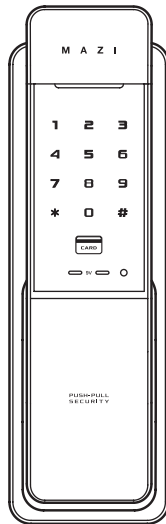
Premium Smart Digital Doorlock

- Distributor : ENTECS Co., Ltd.
- Models : H-7200, H-7290
- Adress : #126, 19, Gosan-ro, Gunpo-si, Gyeonggi-do, Korea
- Manufacture country : Made in Korea
- Website : www.entecs.kr



**H-7200 / Main key**

Opening method : 2-Way  
Password + Card



**H-7290 / Main key**

Opening method : 3-Way  
Password + Card + Fingerprint

Made in KOREA



CAUTIONS

- ※ To receive our full warranty services, please make an entry of all the items in a quality assurance.
- ※ If you do not make the entry, you must pay even during our warranty period.
- ※ In the event of malfunctions due to condensation and moisture, you must pay for warranty services.

- For problems due to condensation or with installation, you must pay for the services.
- In the event you have forgotten passwords, or have lost a card / a manual key, you must pay for the services.

• **Distributor : ENTECS.CO., LTD.**

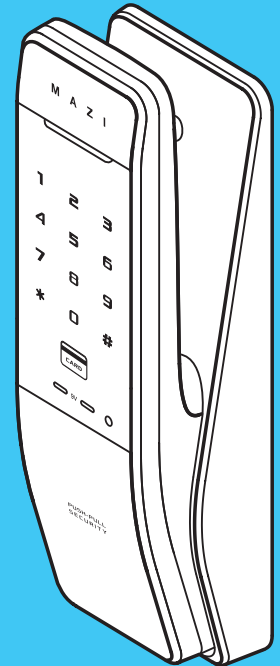


# Digital Door Lock User Manual

New Standard of Premium Digital Doorlock

Be sure to make door  
open manually  
in emergency case

This product can be  
damaged when the  
door lock gets broken



Premium Smart Digital Doorlock  
New Concept PUSH PULL  
Digital Doorlock

## H-7200



### Door-opening function with the use of password, card

You can use your password and card key conveniently and freely make settings and changes.



### Door open function using fingerprint

Door-opening is possible indoors through a connection to the remote controller or wireless transmitter. (H-7290 Exclusive use)



### Fire safety function

It operates at a certain heat(around 65 degree Celsius) in case of fire, which may somewhat vary by installation environment.



### Self-diagnosis function

If it is safe from the risk of loss, theft, and hacking by using the fingerprint as authentication means.



### External double locking device

While you are out for long hours, operation of the indoor buttons can be stopped, through which theft through the milk drop is prevented.



### Alarm function in case of housebreaking and theft

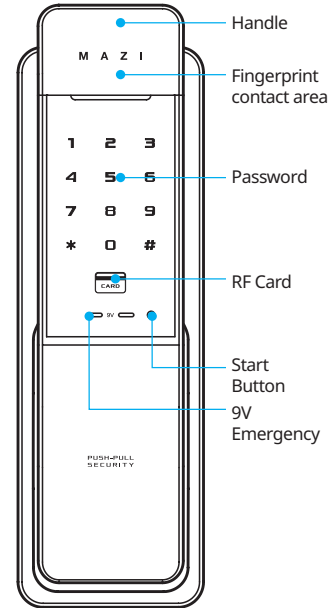
If a wrong password is entered 5 or more times, all the operation is stopped for 30 seconds, and forced door-opening results in an alarm sounding.



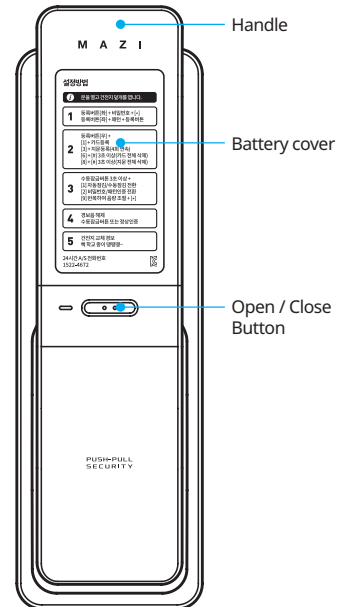
### Connection to home network system(optional)

Door-opening is possible indoors through a connection to the remote controller or wireless transmitter.

## 01 General Information



**Main Key(OUT)**



**Main Key(IN)**

## Contents

- 01 General Information · 3
- 02 Precautions · 4
- 03 How to use · 5
- 04 Product specification · 12
- 05 Product Features · 13
- 06 Warranty Service for Product Defects · 14
- 07 Consumer support · 14

## 02 Precautions

Please read the precautions thoroughly for your safety!



### You should not dismantle randomly the product

- The digital product is assembled minutely and complicatedly in the inside.
- The random dismantlement may be dangerous besides making the troubles of the product.
- Consumer's responsibility in case of random dismantlement



### Prohibition of water cleaning

- It's prohibited to clean with water because water cleaning may disturb an electronic circuit.
- It's hoped that a dry towel is used for cleaning the product.

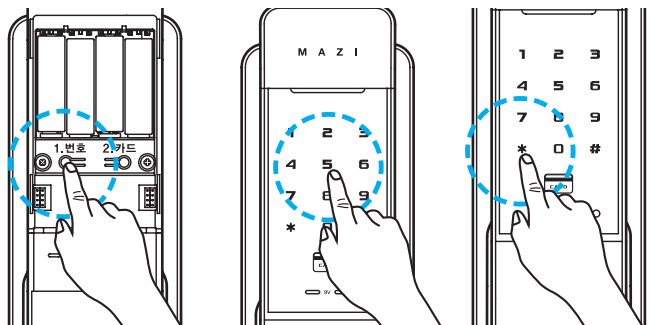


### The response measures to electric discharge of battery are as follows

- The usage period of battery is at most four months to eight months. (Based on the use of ten times a day) Exchange the battery at that time.
- Use 4 alkaline batteries of 1.5v AA. (Rechargeable batteries unusable)
- In case of full discharge, it's possible to open the door with fingerprint, touch-key and password with linking 9V alkaline battery to outdoor body terminal.

## 03 How to use

### 1. Password registration method



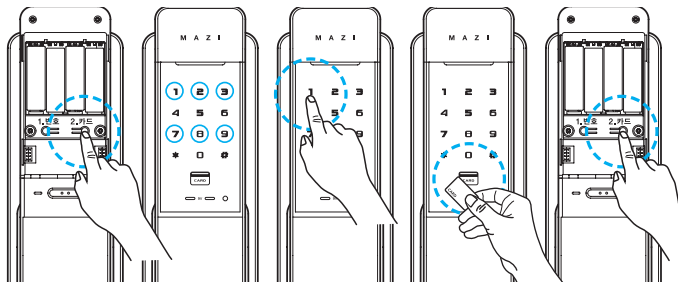
- ① Open the battery cover on the indoor unit of the door lock (the indoor unit) with the door open, and press the registration button ① on the left bottom side.
- ② Enter the numbers you want on the number panel of the front unit. (3-12 digit numbers possible)
- ③ When you press "\*" a notification sound (sounding 'ppiririk') will be heard and the entry will be completed.

#### After password registration, make sure it works



1. When you register passwords for the first time or change them, the door may be locked by mistake. Make sure to open the front door and carry an emergency key, card, with you.
2. For the passwords, specify the 3-12 digit number except for "\*" and "#"
3. If you enter new passwords, the existing ones will be deleted.
4. When all products are delivered, their passwords are set into 1, 2, 3, 4, 5, 6, 7, 8, 9, 0
5. When you install a product for first time, make sure the user enters the passwords himself/herself.

### 2. Card registration method



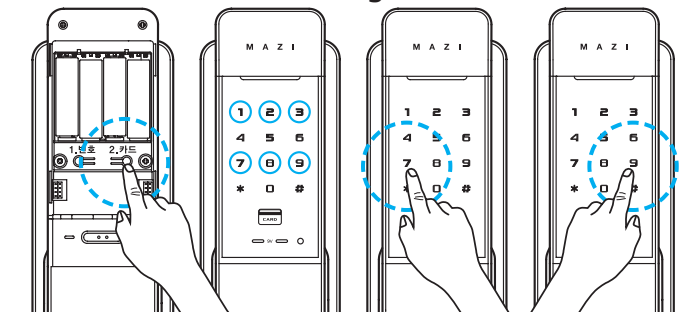
- ① Open the battery cover on the indoor unit of the door lock (the indoor unit) with the door open, and press the registration button ② on the right bottom side.
- ② On the screen, the numbers 1, 2, 3, 7, 8, 9 are lit. (If transmission module isn't connected, only 1, 3, 7, 8, 9 are lit)
- ③ Press "1" - the numbers are blink on the screen
- ④ Hold the card near the reader (continuous registration possible), (Max. 50 cards)
- ⑤ Press the registration button ② on the indoor unit (the card registration finished). After card registration, make sure it works.



For your safety, we recommend you to use all RF-card and Tag that manufacturer provide with. Entecs confirms that "ISO 14443 Type A" certified RF-card and Tag to be used with the Digital door locks. We, Entecs, are not responsible with the cases that customers use other type RF-card and Tag, credit card, Smart card and Mobile phone.

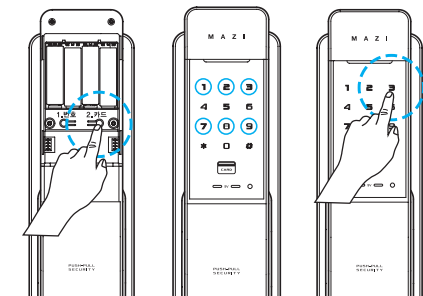
## 03 How to use

### 3. Deletion of all the cards registered



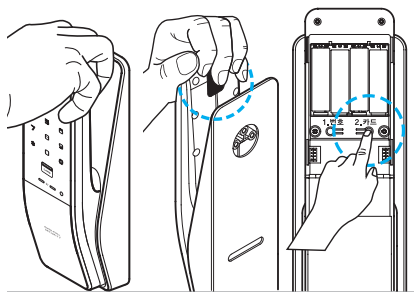
- 1 Open the battery cover on the indoor unit of the door lock (the indoor part) with the door open, and press the registration button ② on the right bottom side.
- 2 On the screen, the numbers 1,2,3,7,8,9 are lit.  
(If transmission module isn't connected, only 1,3,7,8,9 are lit)
- 3 Press '7' — on the screen, '#' is lit (the card deletion ready)
- 4 When you press and hold '#' for 3 seconds, all the cards will be deleted, with a notification sound.

### 4. Fingerprint registration method



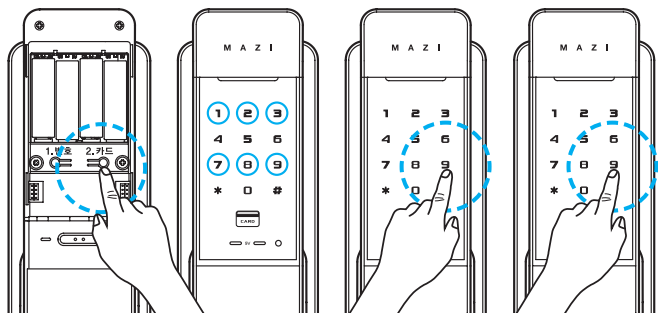
- 1 Open the battery cover on the indoor unit of the door lock (the indoor part) with the door open, and press the registration button ② on the right bottom side.
- 2 On the screen, the numbers 1,2,3,7,8,9 are lit.  
(If transmission module isn't connected, only 1, 3, 7, 8, 9 are lit)
- 3 Press '3'—the fingerprint registration ready (number is lit and then the numbers 1, 2, 3, 4 are lit)
- 4 As soon as the numbers blink, touch your fingerprint to the fingerprint reader (a total of 4 times) (continuous registration possible), (Max. 100 fingerprints)
- 5 Press the registration number ② on the indoor unit (the fingerprint registration finished).

※ Press the card registration button → Press "3" → Register the same fingerprint 4 times in a row as for the card registration button, you are advised to register the same one at several angles.



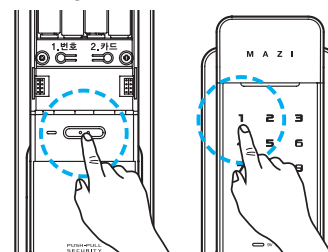
- ※ Since the Fingerprint Identification Digital Door Lock is used as an authentication means, it guarantees no risk of loss, theft, or hacking. Also this model uses a semiconductor method sensor so it is safe due to no residual fingerprint left on the sensor unit.
- ※ When you register your fingerprint, you must register it four times. This thus reduces an identification error to the maximum.
- ※ However, fingerprint registration may not be done, depending on the status of individual fingerprints.

### 5. Deletion of the whole fingerprint registered



- 1 Open the battery cover on the indoor unit of the door lock (the indoor part) with the door open, and press the registration button ② on the right bottom side.
- 2 On the screen, the numbers 1, 2, 3, 7, 8, 9 are lit.  
(If transmission module isn't connected, only 1, 3, 7, 8, 9 are lit)
- 3 Press '9' - on the screen '#' is lit (the fingerprint deletion ready)
- 4 When you press and hold '#' for 3 seconds, the whole fingerprint will be deleted, with a notification sound.

### 6. Ways to set automatic locking / Manual locking



- Beep bee beep sound - Auto Setting
- Beep sound - Manual setting
- ※ When products are delivered, they are set into Auto Lock.

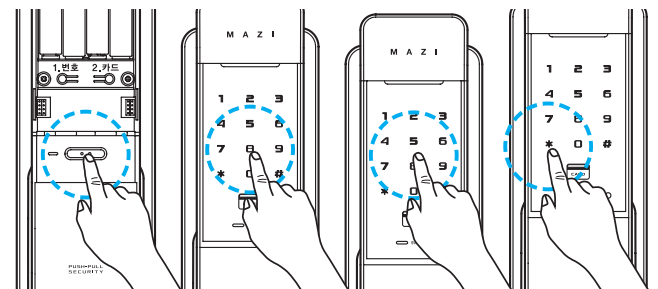
#### How to set into automatic lock

Press the OPEN/CLOSE button for more than 5 seconds and press the number '1' button. Then, a Beep bee beep sound comes out and the system is set into Auto Lock.

#### How to set into manual lock

Press the OPEN/CLOSE button for more than 5 seconds and press the '1' button. Beep sound comes out and the system is set into manual lock.

### 7. Automatic locking time setting change method

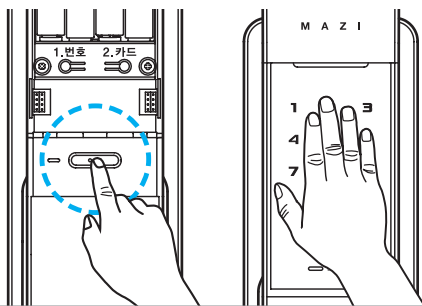


#### How to set automatically closed time

Press and hold the Open/Close button for at least 5 seconds, a notification sound is heard, press '8' first, press the number you want to set among the number '1'~'8' ('5' for 5 seconds), and press '\*'.

## 03 How to use

### 8. Way to lock the door manually



#### Door close inside

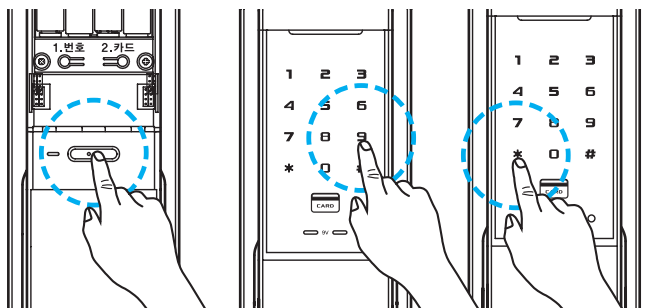
Press OPEN/CLOSE button

#### Door close outside

Close the door and place your palm on numeric button

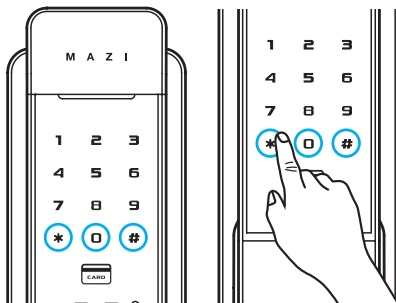
With releasing Auto-door close function, door does not close automatically and follow up as above

### 9. High-pitched / Low-pitched sound change



- 1 Press and hold Open/Close on the indoor unit for at least 5 seconds.
- 2 Whenever pressing '9' on the outdoor part, the sound will change by level, from silence to a high-pitched sound.
- 3 Until the pitch wanted is heard (a total of 8 levels), press '9' and then '\*'

### 10. Forced locking function



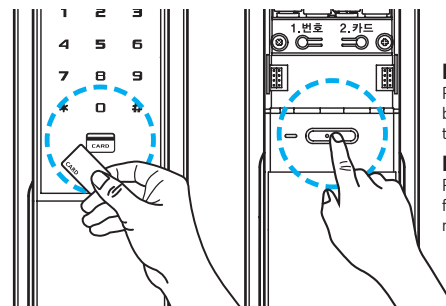
If there is a family member in the house with external forced lock setting, you can open the door by pushing the handle from the inside.

To open the door with the external force lock setting, open the door with a card or password from the outside.

#### External force lock setting

When the door is locked its going out '\*', '0', '#' lights on the plate for 3 seconds. Dragging '\*', '0', or '#' in the direction within 3 seconds sets the double forced lock. When an external forced, lock is set, the indoor unit handle locks and switches to the security mode.

### 11. Way to open the door

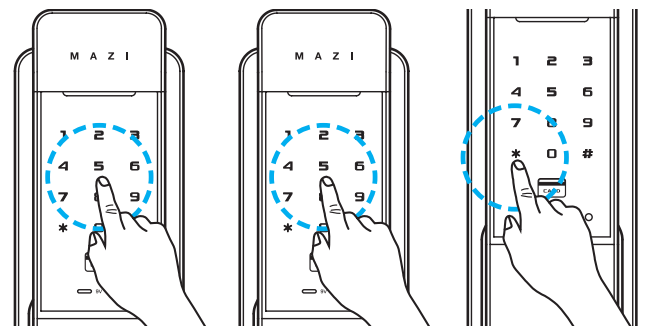


#### Door open in house

Press "OPEN/CLOSE" button or open the door with the handle.

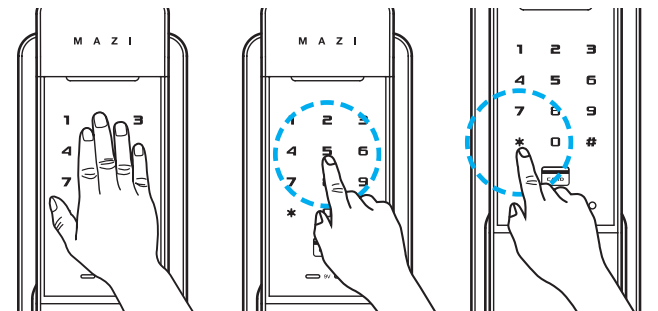
#### Door open with RF card

Place RF card on door lock front and lock is opened with melody



#### Opening with the existing fake password

- 1 It is possible to use the fake number function for the front digit. Lastly, enter the password and '\*'.
- 2 The number of digits must not be over 20.



#### Opening door with password from outside.

Place hand on keypad or press Start button to lighten keypad. Press registered password and press '\*' or '#' to open door.

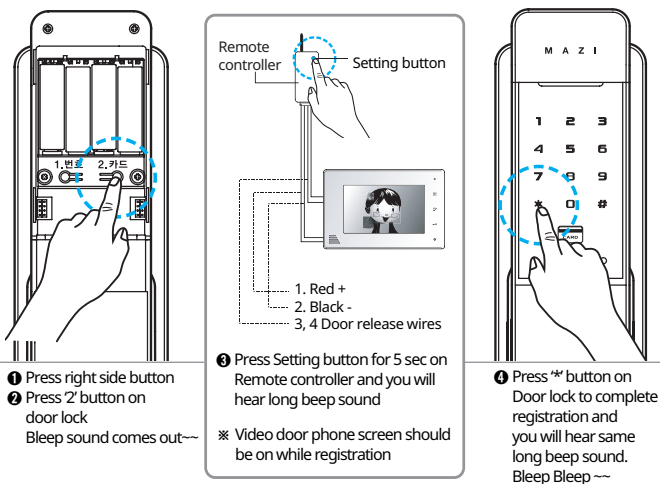
#### Manner Mode

Pressing Start button will activate manner mode, and door will open with no configuration alarm. (Auto-setting to non-manner mode after door opening)

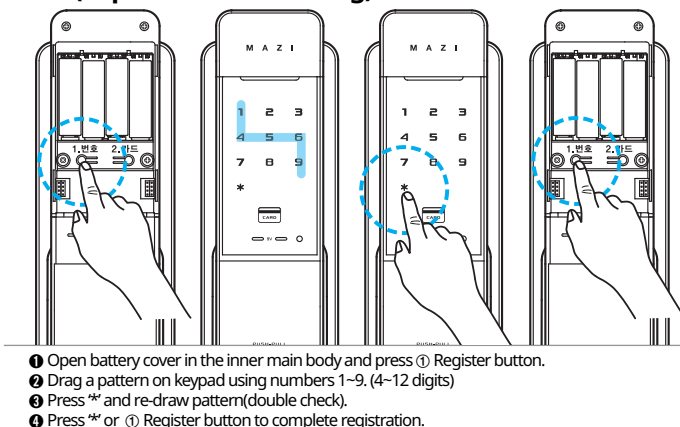
\* When password is consecutively wrong for 5 times, warning alarm is notified and external button stops for 30 seconds.

## 03 How to use

### 12. Way to register wireless transmission / Reception communication device module for door lock(Optional)



### 13. Pattern register / Editing method (In pattern mode setting)



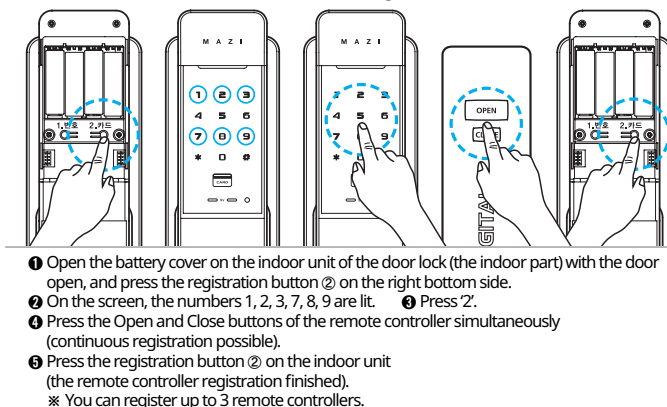
#### Password / Pattern mode setting (Editing) method

- ※ Leaving door open, press OPEN/CLOSE button for 3 seconds, Press number 2 on keypad then you can hear configuration alarm.
- ※ All numbers on keypad will lighten up in password using mode.
- ※ 0, # will not lighten up during pattern mode.
- ※ If pattern mode is configured, a new pattern must be newly registered.
- ※ Diagonal drag pattern is not available.
- ※ If password mode is configured, the password must be newly registered.
- ※ Pattern and password cannot be used simultaneously.

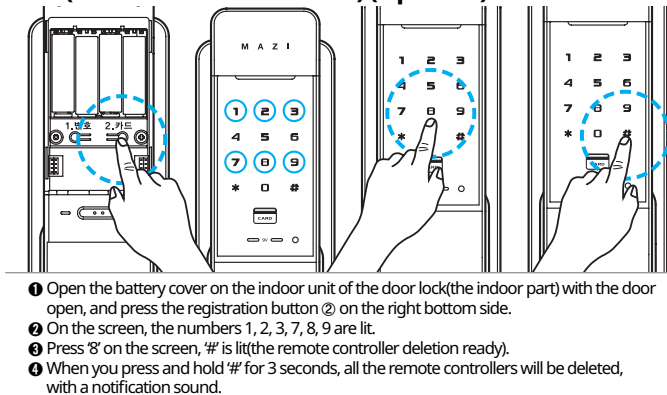
#### Opening door with pattern

- ※ Touch keypad to lighten up numbers. Drag registered pattern to open door.

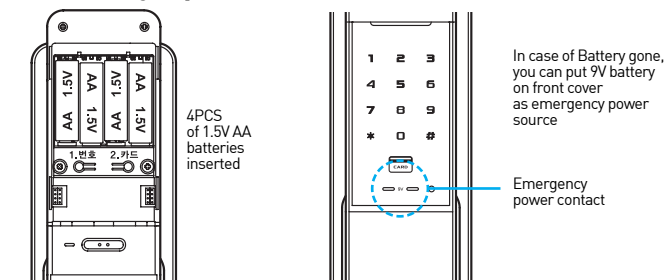
### 14. Registration of remote controller (Communication device) (Optional)



### 15. Way to delete all the remote controllers (Communication devices) (Optional)



### 16. Battery replacement method



- Battery life time** : 4M to 8M upon 10times using a day
- Battery change alarm** : Blinking red lights with melody.  
Open battery cover and replace all 4PCS of 1.5V AA at once. Make sure its polarity
- Emergency power supply** : After battery is fully discharged, place 9V battery on emergency power contact and open the door with password or RF card

## 04 Product specification

### H-7200 □ / H-7290 □

Item	Specification of H-7200, H-7290				
Rated Voltage	4ea 1.5V(LR6)AA alkaline batteries(6V)				
Emergency Power Source	1ea 9V battery(6LF22) (sold separately)				
Operation Method	Electronic control (entering password or reading card key)				
Weight	1.95kg(including the outdoor and indoor units)				
Dimensions	Indoor unit	85mm(W) X 288mm(H) X 70mm(D)			
	Outdoor unit	89mm(W) X 286mm(H) X 65mm(D)			
Item	Usable Frequency	Type of Radio Wave	Type of Radio Wave	Type of Radio Wave	Power Supply
RFID	13.56MHz	A1D	ASK	Single	DC 6V (1.5V AA X 4EA)
For Safety System	447.275MHz	F1D	FSK	Single	
Self-Regulatory Safety Confirmation Certificate No.	B223H5004-17001				
Type and Symbol	F-T-NK-M				
Authorized manufacturer's name	Entecs Co., Ltd.				
Model	H-7200 / H-7290	Country on Manufacture	Made in KOREA		
Vendor	Entecs Co., Ltd.				
Date of Production Year	Year :	Month:			

※ You are recommended to use this device(a Class B device registered for EMC (Electromagnetic Compatibility)) chiefly at home.

※ Any of the details of the manual can be changed without notifying you in advance for improvement of the product functions.  
(a sticker will be used on the follow-up model for any change)

## 05 Product Features



### Number and card key, fingerprint key you can use

You can use your password, card key and fingerprint conveniently and freely make settings and changes.



### The open / Close functions of card and one-touch

All motions became convenient through simple one-touch.



### The function of automatic re-Locking

The automatic locking in case of closing a door



### Self-diagnostic function

The door lock diagnoses the troubles of the system by itself, making you know the troubles of the function and the time to exchange batteries through alarm



### Automatic locking and time setting available

Free time setting available



### The function of outward double-Locking device

In case of long-time outing, the motion of inside button is set to stop so that the robbery through milk slot can be prevented.



### Remote controller, home network registration available(Optional)

Available opening doors with remote controller in door



### No. of cards you can register

You can register up to 50 cards



### Manner function

Through the control of button and melody occurring from the product's motion, it's possible to prevent the neighbors from the noise at midnight.



### Function of fire sensor

In case of fire, a status of 65 ±5 makes the door opened automatically. So, you can escape safety.



### Imaginary number function

The function of making other's passwords unknown



### Button lighting device distinguishable in darkness

When the device is worked, the lamp is lighted, so it's available to use even in darkness.

## 06 Warranty Service for Product Defects

Damage types		Compensation items	
		Within warranty period	After warranty period
State of Normal Use	In case the troubles occur within 12 months after installation	Repair for free	
	In case the same troubles occur two times	Repair for free	Repair for Cost
	In case the same troubles occur three times	Product replacement	Repair for Cost
	In case there is no any parts for repair	Product replacement	Product replacement (Limited to flat-rate depreciation)
Intention or Fault of Consumer	In case of an official trip because of consumer's mistake including the fault exchanging batteries and the immaturity of inputting	Repair for Cost	Repair for Cost
	To exchange consumption goods including batteries	Repair for Cost	Repair for Cost
	Failures or damages due to other purposes than the original purpose of the product	Repair for Cost	Repair for Cost
	Failures or damages of purpose	Repair for Cost	Repair for Cost
	Failures or damages because entering passwords has been omitted or passwords have been forgotten	Repair for Cost	Repair for Cost
	Product damaged because of not carrying an emergency manual key	Repair for Cost	Repair for Cost
		Repair for Cost	Repair for Cost
Failures or damages due to a fire or natural disasters		Repair for Cost	Repair for Cost
Malfunctions due to condensation and moisture and improper operations due to poor installation		Repair for Cost	Repair for Cost

## Warranty Card(for Company)

Thank you very much for purchasing Entecs Co., Ltd.'s digital door lock. The quality assurance period is counted from the date of purchase. Therefore be sure to have the date specified for sufficient service.

Consumer Name	
Telephone	
Model Name	
Serial Number	
Term of Guarantee	
Address	
Installation Agency	
Telephone	
Address	

- This product is produced by the thorough quality management.
- In case any troubles occur in the state of normal use within the warranty period, you can receive A/S for free.
- You are required to fill up the address, name and telephone number on the warranty card in time of buying the product and to keep the card well, and if otherwise, you need to pay for repair.

## 07 Consumer support

- Then, in case of the carelessness of consumers and after the warranty period(one year), you need to pay for the repair.
- In case you have no the warranty card, you need to pay for A/S, so you are required to keep it.
- The cost for repair includes the cost of parts and the business trip expenses.
- This compensation standard for damage follows the compensation regulation for consumer damage noticed by the Ministry of Finance and Economy.